

Uni. Capital

城中城

3-Storey Shophouses &
4-Storey Standalone Shopping Complex

• Fronting Kuching-Samarahan Expressway • Opposite UNIMAS



99
Years Lease

Uni. Capital comprises thirty (30) units of shophouses

The attractive and simple contemporary architecture styling portrays the uniqueness of the entire development. It is one and only, distinctive shopping complex offers both the locals and passerby with conveniences and more choices.

The described property is in the capacity to absorb the proposal of its true potential development and becoming a socio-economic area as it is fronting to Kota Samarahan Expressway, capturing on high passerby and increasing surrounding working and residing populace. The property is responsive and well supported by population following the mainstream of developments, the development of Kota Samarahan as a hub of knowledge and other commercial facilities and amenities in the vicinity.

- 30 间三层楼店屋
- 位于晋汉省高速公路，砂大对面
- 毗邻商业中心，大学城及备有完善设施
- 繁忙地带，高密度住宅区



Locality Plan:



Special Bumiputras Discount!

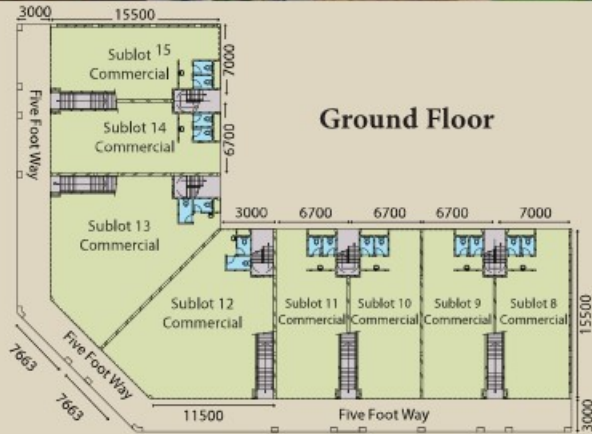
Contact Details:

082-422 768
082-423 768
016-879 7206

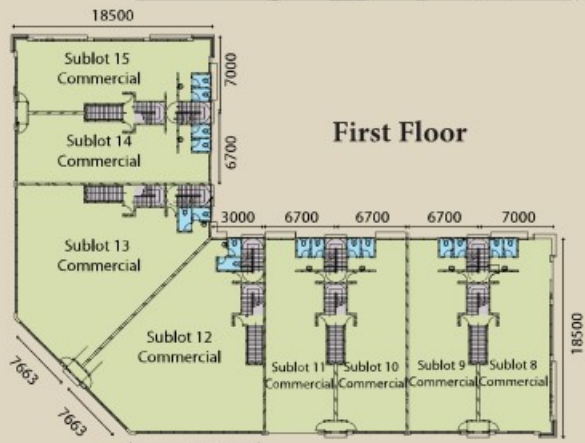
www.shmproperty.com



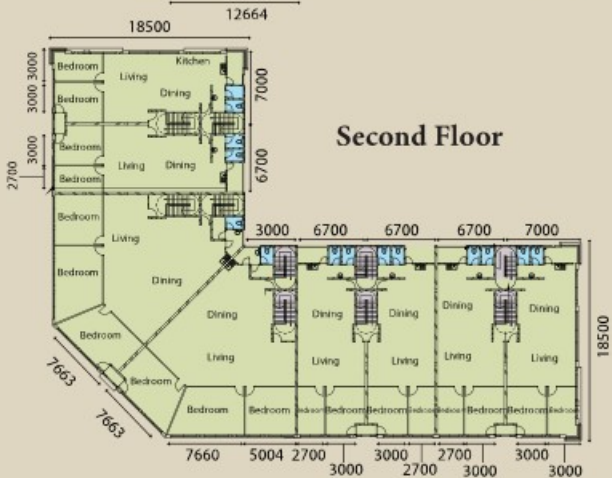
Vibrant Focus On Your Business Prominence 优质规划 卓越商址



Ground Floor



First Floor



Second Floor



SPECIFICATIONS

Structure

- Reinforced concrete framework/red clay brickwalls.

Roof

- Selected quality metal deck/roofing sheet.

Ceiling

- Exposed RC slab ceiling to ground, first and five footway.
- Gypsum plaster on 2nd floor, all washrooms and kitchen.

Doors

- Aluminium Roller Shutter to ground floor shop front, rear and side entrance where applicable.
- Fire rated main doors at staircase.
- Flush panel door to the rooms.

Windows

- Aluminium framed window with tinted glass.

Floors

- Cement render to all areas.
- Quality ceramic tiles to washrooms, balcony and kitchen.

Walls

- Selected weathershield paint to external walls.
- Selected emulsion paint to internal walls.
- 1.5m high Ceramic tiles to washrooms and kitchen.

Plumbing

- Concealed plumbing, standard sanitary ware.
- Stainless steel single bowl single drainer sink to kitchen.

Electrical

- Concealed conduit wiring, powerpoints and switches.

DACO RESOURCES SDN BHD (447248-M)

(Associate Company of SIN HAI MIN Development Sdn Bhd)

Lot 545, 1st Floor, Bangunan Cheema, Jalan Tun Ahmad Zaidi Aduce, 93400 Kuching, Sarawak, Malaysia.

Office Tel: 082-422768, 082-423768 Fax: 082-236768

Disclaimer

All illustrations and colour scheme are artist's impression only. The information contained herein is subject to change without notification as may be required by the relevant authorities or developer's architect and cannot form part of an offer or contract. All measurements are approximate. Whilst every effort has been made to ensure accuracy, the owner, developer and managers cannot be held responsible for any variations or inaccuracies.